

\$9.90 INCL GST
AUG/SEPT 2018

TM®

Highlife

COUNTRY LIFE IN THE

SOUTHERN HIGHLANDS OF AUSTRALIA

THE NEW GEORGIAN

*An elegant
Burradoo home*

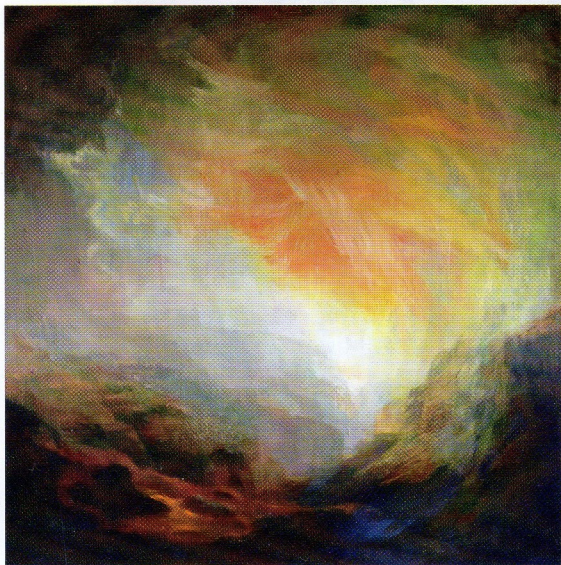
LOOK OUT!
the 12 best views
in the Highlands

Wildewood

a beautiful, healing garden

extreme
weaver
Natalie Miller

farmers/butchers/tour guides
*How the Maugers
raised the steaks*



CLOCKWISE FROM ABOVE JULIET HOLMES A COURT'S PAINTING AND RUTH LEVINE'S VESSELS ARE INSPIRED BY JAMES VILES' DISH 'NORM'S POTATOES'.



PHOTOGRAPH JASON LOUCA



The Sydney Morning Herald called *Shoot the Chef*, and he was interested in working with other art forms," says Juliet, who has taught painting at the Art Gallery of NSW for 15 years. "How fascinating, I thought, to have a painter and a sculptor interpret in their own language his superb cooking."

On Sunday, September 23, *A Visual Feast – Two Artists and a Chef* will open at Sturt Gallery, featuring paintings and sculptures by Juliet and Ruth and recipes by James.

"James sent us a copy of his Biota cookbook where his dishes look like exquisite artworks. Ruth and I selected 12 recipes – not for taste, but for the colour, texture and the forms of the finished dish.

"The recipes were a sensational springboard of inspiration," Juliet says. "They led us into shapes and colours we would never have used. This was at times difficult, but it also has resulted in an original exhibition where three art forms – sculpture, painting and cooking – entwine to create something unique, a real visual feast."

The exhibition will open at 11am on September 23 and will run until November 12.

DETAILS sturt.nsw.edu.au

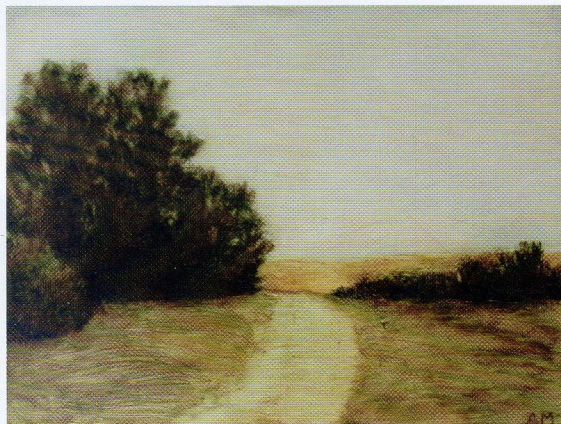
Feast your eyes

Last year, Sydney painter Juliet Holmes à Court and Sydney sculptor Ruth Levine held their first collaborative exhibition titled *Two Artists and a Poet*, where they interpreted the poetry of Paolo Totaro. Soon after, two events spurred on their latest

collaboration: Mittagong's Sturt Gallery became interested in showing their work and Juliet met chef James Viles, owner of the two hatted Bowral restaurant Biota Dining.

"James was one of the initiators of a photography competition with

Collector's small wonders



PATHWAY NEAR FIVE MILE CREEK BY ASHLEY MORGAN

stone house, Helen Stephens Gallery showcases paintings, prints and ceramics by local and regional artists and "other artists who catch my attention". Helen established the gallery in Sydney in 2007 before moving it to Collector, where she has lived since 2009.

From August 5, an exhibition by Sydney artist Ashley Morgan will be on display. Inspired by the haunting landscape around Hanging Rock in Victoria, *Small Wonders – Evocative Landscapes* consists of 25 small-scale (20 x 14 centimetre) oil on wood works.

Ashley aims to transform open space to an intimate scale. "Through painting and studying the abstract qualities of shape, value and pattern, I gained deeper insight into my subject," Ashley says. "Using a limited palette, I wanted to capture the unadorned essence of the landscape."

Small Wonders – Evocative Landscapes will be at Helen Stephens Gallery, 39 Murray Street, Collector, until September 30. The gallery opens Friday, Saturday and Sunday, from 11am to 4pm, or by appointment.

DETAILS helenstephensgallery.com

Sheep to chic

Felt maker Margaret Connor and shibori artist and milliner Annette Brereton will combine their talents to present a fundraising fashion parade in Bowral on August 24. *From Sheep to Chic* will include one-off dresses, wraps, scarves, hats and fascinators, which will all be available for sale.

Margaret and Annette are regular exhibitors at the annual Southern Highlands Textile and Fibre Network exhibition, held in November. As part of their August 24 event, Margaret will demonstrate felt-making using various natural fibres. The parade will raise money for Wingecarribee Adult Day Care Centres, a charity partner for Tulip Time 2018.

From Sheep to Chic will run from 5.30pm to 7.30pm at Bowral Golf Club. Tickets cost \$25 (including a glass of champagne and canapes). For bookings, email board@wadcc.org.au or phone Margaret on 4861 2294.



DRESS BY MARGARET CONNOR

With its popular cafe, called Some Cafe, and Collector Wines Cellar Door, the small village of Collector, just off the Federal Highway and halfway between Goulburn and the ACT, has become a popular stop for those travelling between Sydney and Canberra. Success begets success, and since November the village has boasted another visitor destination, an art gallery.

Located in a converted shed behind owner Helen Stephen's 1840